



jetNEXUS Discovery User Guide

Document: jetNEXUS Discovery user guide
Version : 1.2
Release date: 07/01/2009
Compatibility: Windows 2000, Windows 2000 server, Windows XP, Microsoft 2003 server

jetNEXUS Solutions Limited

Grove Business Park
Cedar Court, Waltham Road
Maidenhead.
Berkshire.
SL6 3LW
Phone: 0870 382 5050 or International +44 (0) 1628 820 630
Fax: 0870 382 5520 or International +44 (0) 1628 820 647
www.jetnexus.com

For support please visit www.jetnexus.com or log into your customer support portal at

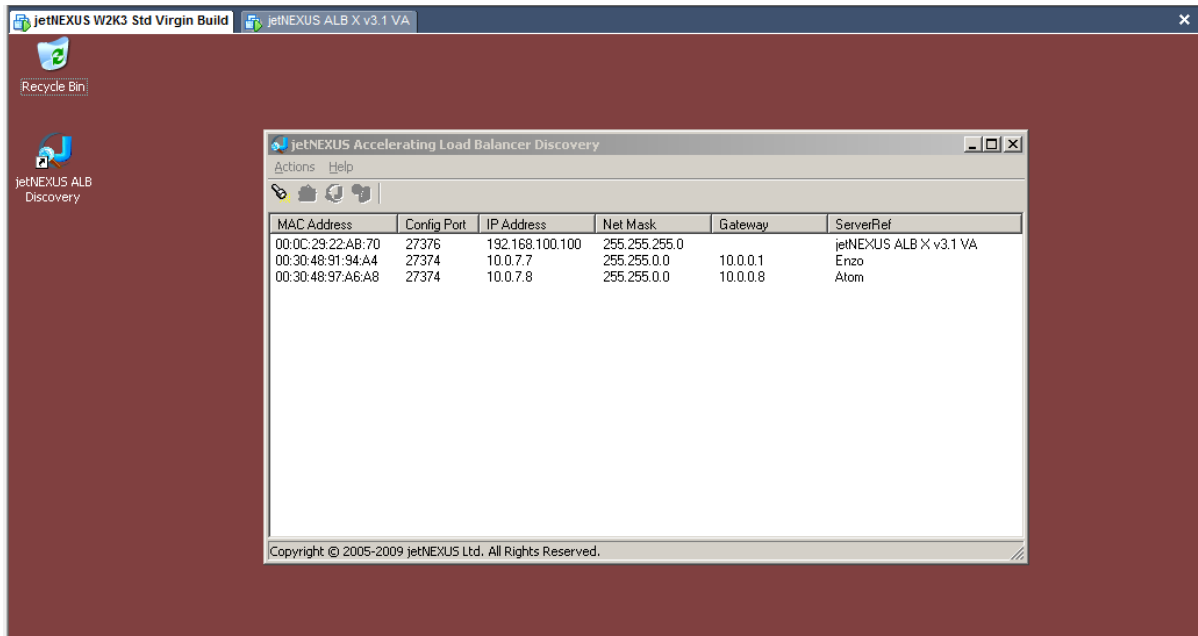
<http://www.jetnexus.com/crmselfservicedemo/>

What is jetNEXUS Discovery?

jetNEXUS Discovery is designed to make the initial configuration of the jetNEXUS ALB and jetNEXUS ALB VA easy. The application can be installed onto a desktop and will scan the local network for jetNEXUS devices. Once found essential information such as an initial management IP address can be easily assigned.

How to use Discovery?

Download the jetNEXUS application onto the desktop and run the installation. After the installation is complete double click on the Discovery Icon to launch the jetNEXUS discovery application.



Right click on the on device you would like to configure and select “configure”. A message box like the following below will then pop up.

Mac Address: 00:0C:29:22:AB:70

IP Address: 192.168.100.100

Network Mask: 255.255.255.0

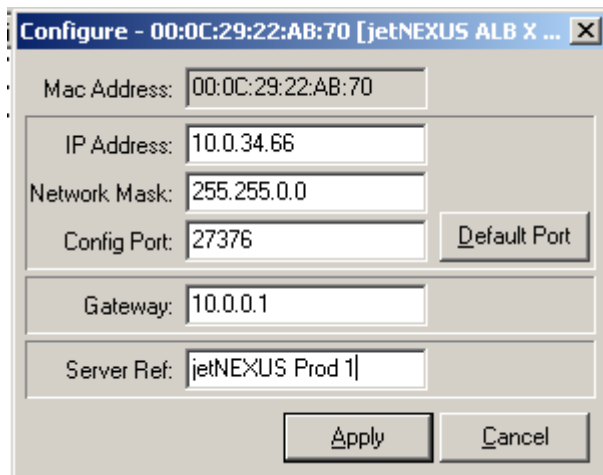
Config Port: 27376

Gateway:

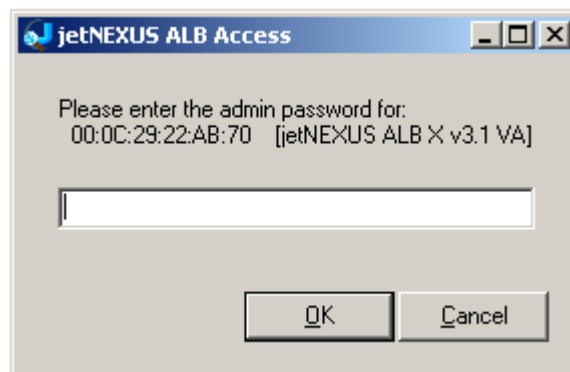
Server Ref: jetNEXUS ALB X v3.1 V

Enter the following information and then click on apply.

- IP Address:** The Management IP Address of the device
- Network Mask:** The network Mask of the Device’s management IP
- Configuration Port:** The configuration port of the secure web interface (Default is 27376)
- Gateway:** The Default gateway
- Server Ref:** A name to identify the device



In this example we have used 10.0.34.66 as the management IP address



Once you click on the apply button you will be prompted for the password:

Default password is: jetnexus

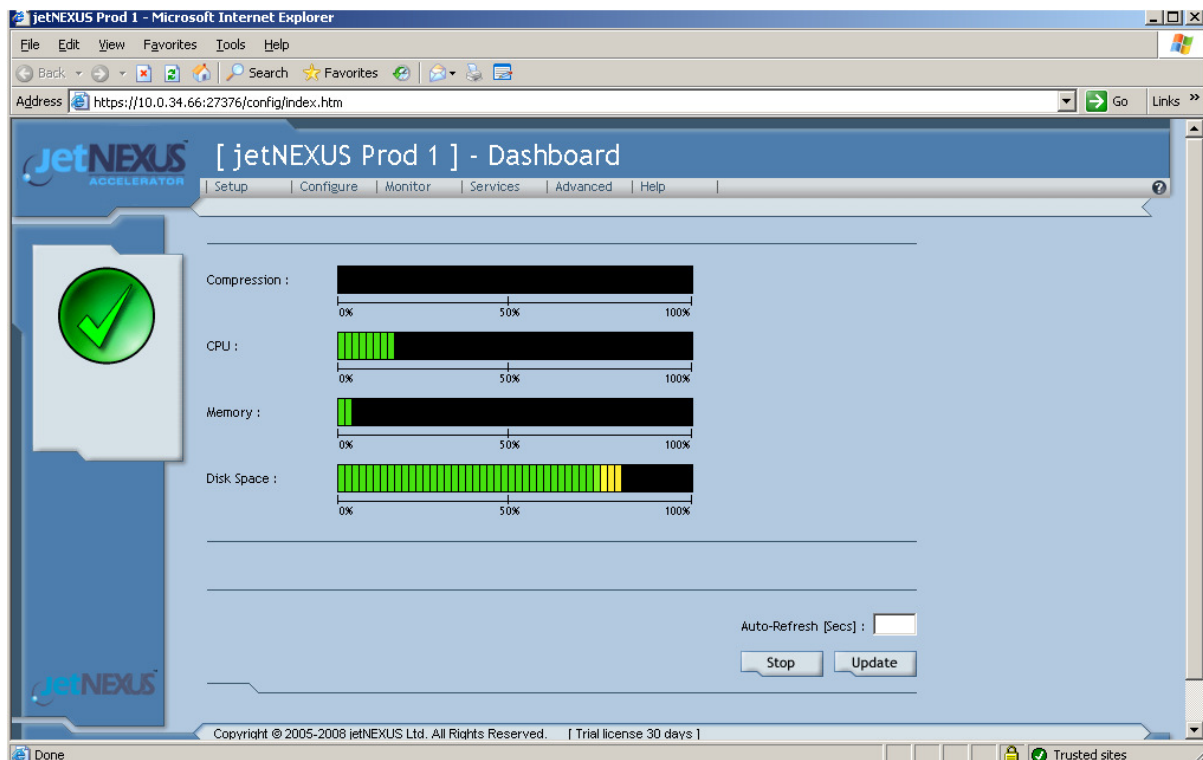
MAC Address	Config Port	IP Address	Net Mask	Gateway	ServerRef
00:0C:29:22:AB:70	27376	10.0.34.66	255.255.0.0		jetNEXUS Prod 1
00:30:48:91:94:A4	27374	10.0.7.7	255.255.0.0	10.0.0.1	Enzo
00:30:48:97:A6:A8	27374	10.0.7.8	255.255.0.0	10.0.0.8	Atom

Now double click on the ALB you would like to configure and it will load the web admin in a browser:

To log in you can use the default username and password:

Username: admin **Password:** jetnexus

In this example the web management interface will come up on: **http://10.0.34.66:27376**



Now please refer to the getting started guide.