



---

## jetNEXUS Discovery User Guide

**Document:** jetNEXUS Discovery user guide  
**Version :** 1.5  
**Release date:** 22/07/2009  
**Compatibility:** Windows 2000, Windows 2000 server, Windows XP, Microsoft 2003 server, Windows Vista.

### jetNEXUS Solutions Limited

Grove Business Park  
Cedar Court, Waltham Road  
Maidenhead.  
Berkshire.  
SL6 3LW

Phone: 0870 382 5050 or International +44 (0) 1628 820 630  
Fax: 0870 382 5520 or International +44 (0) 1628 820 647

### USA

Phone: (866) 865 2393  
Fax: (347) 649 2182

[www.jetnexus.com](http://www.jetnexus.com)

For support please visit [www.jetnexus.com](http://www.jetnexus.com) or log into your customer support portal at

<http://www.jetnexus.com/crmselfservicedemo/>

## Basic jetNEXUS Setup

On first boot jetNEXUS will boot and try to obtain an IP address via DHCP. If there is no DHCP server present it will boot with its default IP i.e. **192.168.100.100**. On subsequent boots the DHCP client is disabled.

The simplest way to initially configure the ALB-X (should you not be able to contact it with a web GUI) is to use the jetNEXUS Discovery application. The jetNEXUS discovery application will scan the local network looking for ALB's and allow you to perform some basic configuration such as set a management IP/ default gateway etc. (Please see jetNEXUS Discovery user guide)

By default the basic web interface of the ALB can be accessed by:

<https://192.168.100.100:27376>

## What is jetNEXUS Discovery?

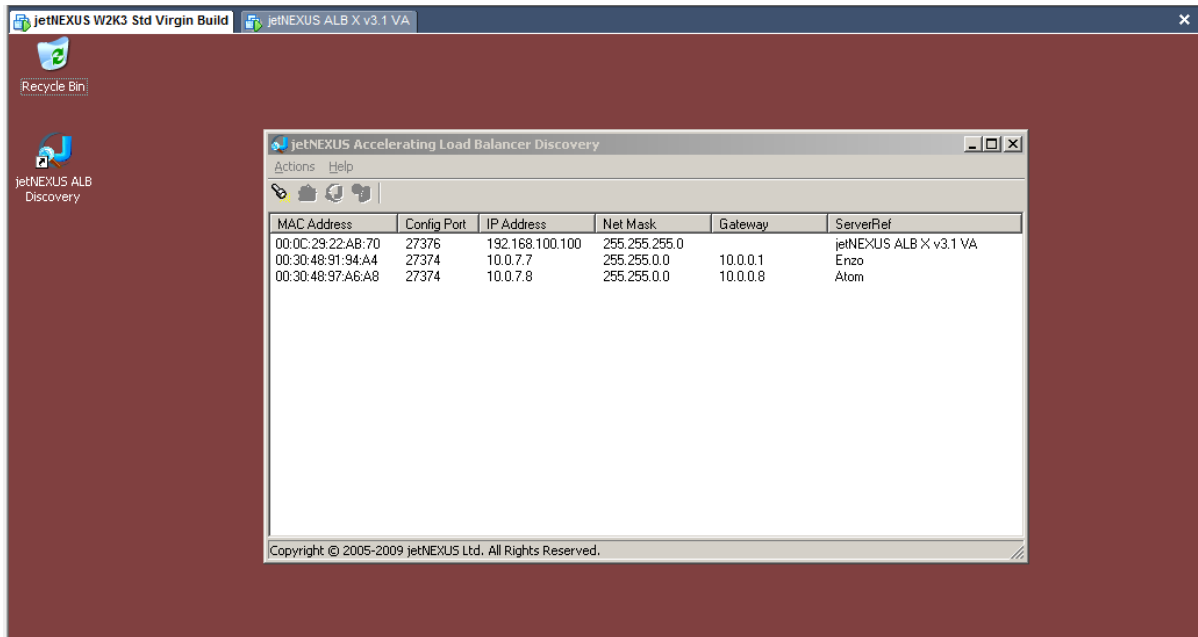
jetNEXUS Discovery is designed to make the initial configuration of the jetNEXUS ALB and jetNEXUS ALB VA easy. The application can be installed onto a desktop and will scan the local network for jetNEXUS devices. Once found essential information such as an initial management IP address can be easily assigned.

## Where can I get jetNEXUS Discovery from?

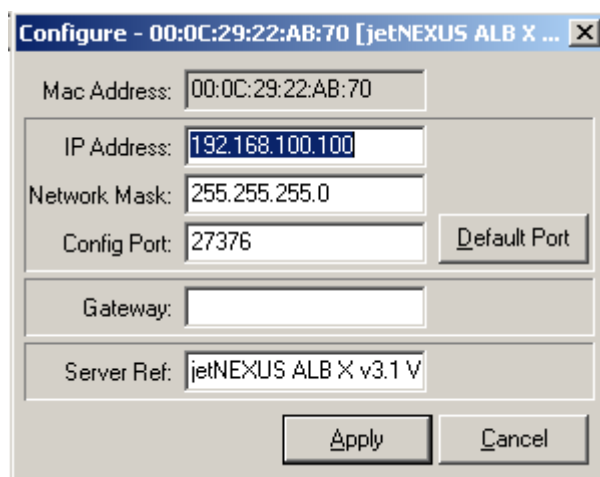
Jet NEXUS Discovery can be found on the CD included with you jetNEXUS appliance. It is also included in the Zip file containing the jetNEXUS virtual appliance. You can also download it from your customer portal. Please contact support if you require customer portal details.

## How to use Discovery?

Download the jetNEXUS application onto the desktop and run the installation. After the installation is complete double click on the Discovery Icon to launch the jetNEXUS discovery application.



Right click on the on device you would like to configure and select “configure”. A message box like the following below will then pop up.



Enter the following information and then click on apply.

- IP Address:** The Management IP Address of the device
- Network Mask:** The network Mask of the Device’s management IP
- Configuration Port:** The configuration port of the secure web interface (Default is 27376)
- Gateway:** The Default gateway
- Server Ref:** A name to identify the device

Configure - 00:0C:29:22:AB:70 [jetNEXUS ALB X ...]

Mac Address: 00:0C:29:22:AB:70

IP Address: 10.0.34.66

Network Mask: 255.255.0.0

Config Port: 27376

Gateway: 10.0.0.1

Server Ref: jetNEXUS Prod 1

In this example we have used 10.0.34.66 as the management IP address

jetNEXUS ALB Access

Please enter the admin password for:  
00:0C:29:22:AB:70 [jetNEXUS ALB X v3.1 VA]

Once you click on the apply button you will be prompted for the password:

Default password is: jetnexus

jetNEXUS Accelerating Load Balancer Discovery

Actions Help

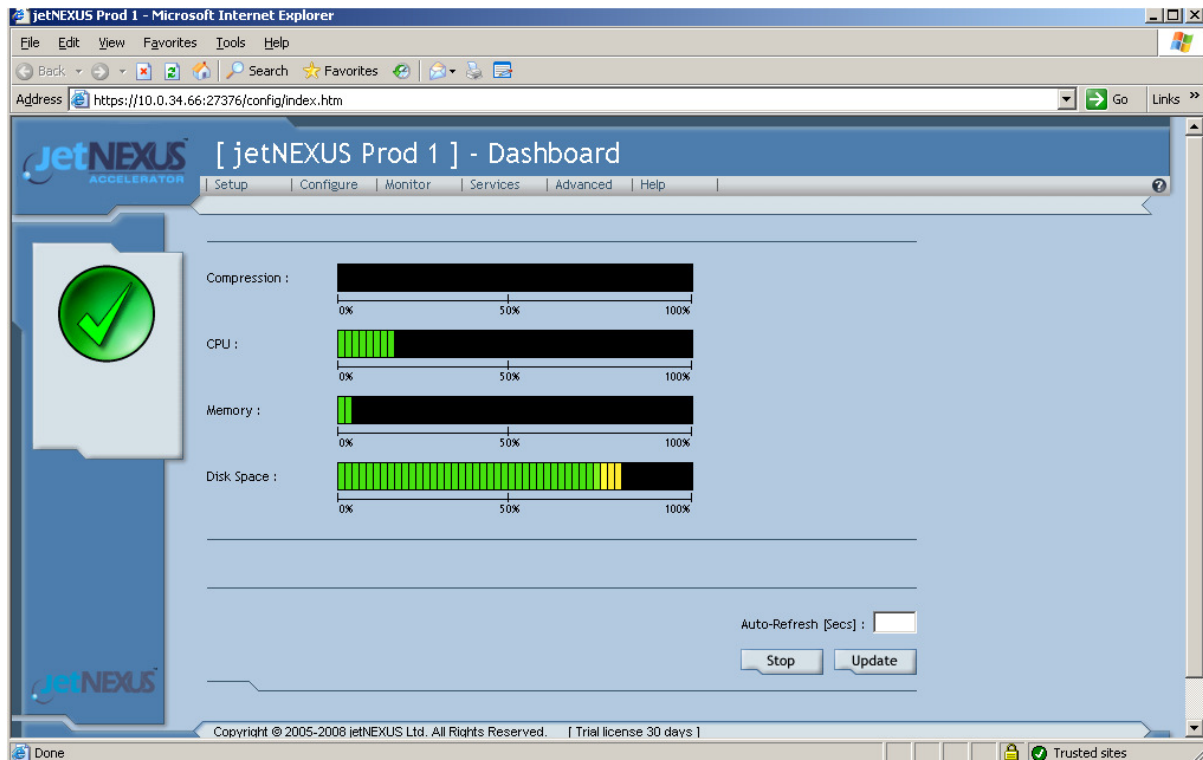
MAC Address	Config Port	IP Address	Net Mask	Gateway	ServerRef
00:0C:29:22:AB:70	27376	10.0.34.66	255.255.0.0		jetNEXUS Prod 1
00:30:48:91:94:A4	27374	10.0.7.7	255.255.0.0	10.0.0.1	Enzo
00:30:48:97:A6:A8	27374	10.0.7.8	255.255.0.0	10.0.0.8	Atom

Now double click on the ALB you would like to configure and it will load the web admin in a browser:

To log in you can use the default username and password:

**Username:** admin **Password:** jetnexus

In this example the web management interface will come up on: **http://10.0.34.66:27376**



Now please refer to the getting started guide.

## Appendix – Initial config using CLI (Command line interface)

The command line interface is designed to only configure that basic settings of the so that the device and bring up and its web interface for further configuration. In addition to this the CLI can be used to reset the device to its factory defaults.

### *Accessing the CLI*

The CLI can be accessed by three methods

- 1) SSH client (assuming it has not been disabled in the configuration)
- 2) Serial (RS232)connection
- 3) Consol

Connect to the device using one of the methods as described above

Log into the consol with the following credentials Username=admin, Password=jetNEXUS

To change the management IP address run the following command

```
set greenside=192.168.12.150
```

To change the subnet mask:

```
set mask eth0 255.255.0.0
```

You can check your changes by running the show command for example (show greensideIP)

If you need to change the default gateway you need to run the following command. In this example it will change it to 192.168.10.1. Be careful when changing the gateway remotely as if you get it wrong you may have a long drive!

```
route add -net 0.0.0.0 netmask 0.0.0.0 gw  
192.168.10.1
```

To return the device to the factory defaults type the following

```
Reset XXX
```

To exit this CLI type ***exit***